

## Lifts by AM Lifts Ltd.

### Rapid Installation: - Hydraulic lifts.

#### Step 1. Motor Room.

Verify the mains Switch Isolator is installed and an appropriate Electrical supply is available and Live.

Install the Control panel in Position. (Wall Mounting).

Position and Install the Pump/Tank assembly.

Connect using trunking and conduits or Multi-Core cables (wiring supplied), the Pump Motor, the Valve, and Tank assembly (thermistors, solenoids, pressure switches etc) to complete the Lift Motor Room wiring.

Fill the tank with Hydraulic Oil to the correct level and ensure the main pipe Stop valve is off. Connect the Main Supply to the Lift Control Panel.  
Connect the Lift car Lighting Supply to the Lift Control Panel.

#### Step 2. Shaft/Hatch wiring installation.

Pass the Main 50 core Bus cable connecting the Panel to the Shaft halfway box thro' to the Machine Room Via the Shaft

**leaving the Halfway Box and the Car Top Station on the Lower Floor landing entrance,** an aperture for access from the Shaft to the Machine room has been provided for cabling by the Builder.

Connect the Main 50 core to the appropriate terminals in the Control Panel. ie. 1-50.

Fix in position, the Pit Stop Switch and Wire to the control panel using the 2 core cable provided.

Turn on the Lift Main Supply verify the Pump/ Valve operation by means of the Car Top Control station.

All appropriate shorting Links to allow Manual operation have been pre-connected by works other than the pit switch which must be connected for safety isolation.

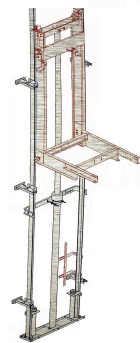
Check Pump rotation direction is correct for Up control selection also down valve solenoid operation.

**Leave the Main valve Closed.**

#### Step 3. Pit, Car and Buffer, Ram and first Guide length Installation.

Install all Pit equipment IE,

- a. Guide Fixings and the first length of guide Rails
- b. The Main Ram supports, Ram ,Buffers and support steelwork.
- c. Connect the Main Hydraulic Hose.
- d. Install the Car Sling and rope the car Support Frame. (If not direct acting.)  
If direct Ram then secure the XHead to the car frame.
- e. Install the Bottom Landing entrance to suit the Car Frame finalised position and connect the appropriately numbered 8 Core Cable to the Entrance and the Shaft halfway box by insertion of the 8 pin socket to the number 1 socket.



## RAPID ERECTION



Step 3 continued:-

- f. Assemble, Install in the correct position the complete Cabin within the Sling.
- g. Align with the Bottom Installed Landing Entrance and secure and pin the Cabin and floor pan in position.
- h. Open the Main Valve, Bleed the Ram and test movement to move the Lift Up & Down.

Step 4. Entrance installation.

Using the Cabin Top as a working platform,

Install the Bottom Limit switch ramps and Brackets.

Install the Next Guide lengths working upwards at the same time

Install the remaining Landing Entrances on the way up, again connect to the Halfway Box using correct 8 Core cable and halfway box numbered socket.

Assuming the Car Top Control is now being used upon the Car Top, at the Halfway point, using a rope or other means pull the Shaft Halfway box, which has been left on the Lower Landing, up the side of the car and secure in the correct position in the Lift Well ensuring correct Hanging of the trailing connection to the Car and secure in the correct position the Car Top Control Station if this has not already been completed. Tidy up and secure excess trailer cable and entrance cables installed so far.

Continue Installation of Guides and remaining entrances in an upward direction, working on the car Top until the mechanical installation is complete.  
Install the Upper Limit Switch operating Ramps and Brackets.

Step 5 Completion of Shaft wiring and switching equipment.

Using the correctly numbered 8 Core cable provided (8 Pin plug at one end for the Shaft Halfway Box)  
Connect each Landing entrance on the way down using the Cabin as a platform, at the same time position roughly in position (to Drg. Supplied) the required Magnets for Floor selection and Positioning.

At a convenient Landing Level complete installation of any remaining Car Top equipment, car Pushes etc  
Wiring for the Car Top equipment is Pre-Connected to the main Bus. in accordance with the supplied Drgs. It remains to be connected to the appropriate components. (Drgs. supplied).

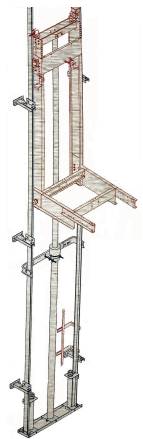
Position Door Couplers and set Shaft end Limit switches for position and correct operation on the operating ramps.

Run the Lift from Top to Bottom checking all clearances and Door Coupler settings to ascertain the Lift is ready to run.

Remove all temporary shorting wires within the Control Panel to ensure correct safety interlocking of all switching and verify by metering and testing.

Once all circuitry is proofed turn the Car Top Control to 'Normal' and set up the lift for floor levels and operation.

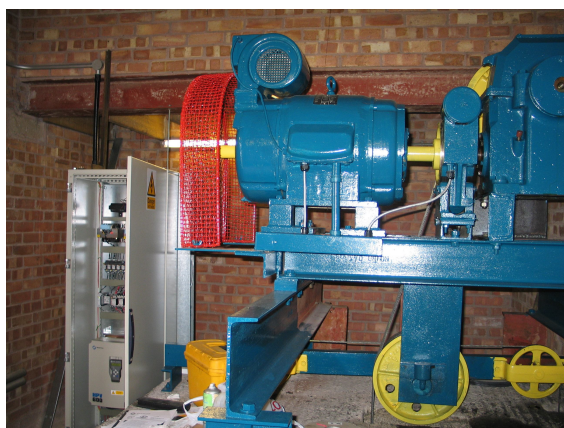
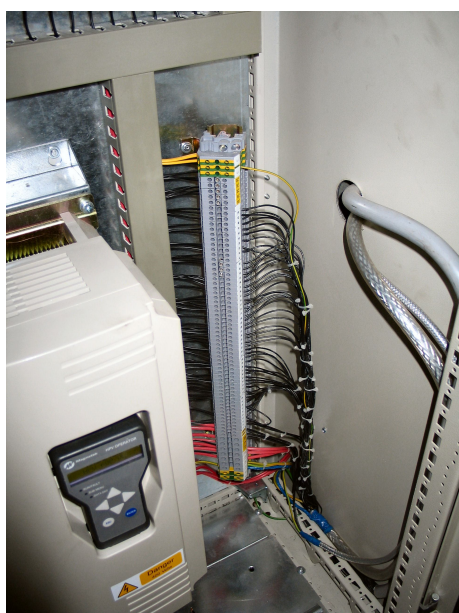
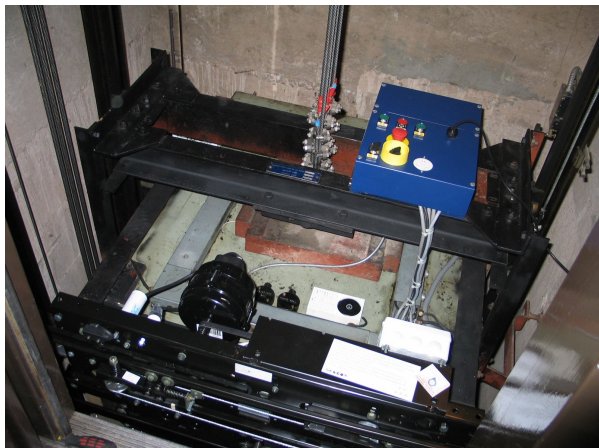
Installation should now be complete.



AM Lifts Ltd  
Rayner House  
23 Higher Hillgate  
Stockport  
Cheshire  
SK1 3ER

Tel: 0161 480 9771  
Fax: 0161 480 9881  
Mob: 0755 337 4219  
Email: [info@amlifts.co.uk](mailto:info@amlifts.co.uk)  
Web: [www.amlifts.co.uk](http://www.amlifts.co.uk)

Email  
don@amlifts.co.uk



AM Lifts Ltd  
Rayner House  
23 Higher Hillgate  
Stockport  
Cheshire  
SK1 3ER

Tel: 0161 480 9771  
Fax: 0161 480 9881